

Bus Riders visit SEB's offices to view their new collection

On Thursday 20th of September, the Bus Riders network had the pleasure of being the **first external group** to visit and tour **SEB's art collection**, housed in their new offices in Solna. The collection includes approximately two hundred pieces of art, worth over SEK 50 million, that adorn the walls of the bank's three buildings. Each building has a theme; urbanism, at home and nature.

It was in conjunction with SEB's move to Solna that the decision was made to sell parts of the old collection, mostly made up of "paintings with gold frames made by white men" to quote our guide for the evening, **CF Hill's Michael Elmenbeck**. The idea of the new collection wasn't without its sceptics but, as Elmenbeck explained, SEB's former CEO, **Annika Falkengren**, was a strong ambassador of the project, which was very important factor in its success.

The new collection aims to both maintain **SEB's heritage** but also reflect the **new values of modern Sweden**, which for example included prioritizing the representation of women. Approximately half of the art in the collection is created by leading, female, Scandinavian artists.

One of the first pieces we viewed was in a painting by **Karin Mamma Andersson**. The painting, titled "Swansong 2016" is located in the main lobby and is considered to be the crowning jewel of the collection in that building. The masterpiece is one of several examples that reflects the view that it is better to have "**fewer and better**" pieces, Elmenbeck explained.



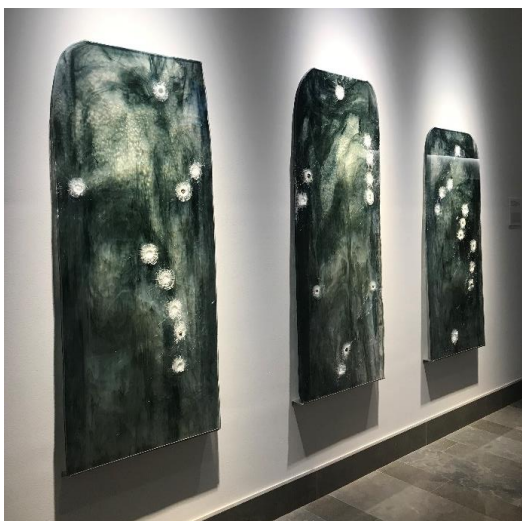
Swansong by Karin Mamma Andersson

Another remarkable piece is a large curtain made by **Jockum Nordström**, which hangs in one of the larger conference rooms. The curtain, which took six months to produce, is ninety square meters. Nordström's curtain is one of the pieces that it is hoped will be

shared by many of **SEB's employees** as it hangs in a room where many will take part in seminars and presentations.

One of the pieces that has had one of the strongest reactions, by **Ulf Rollof**, are three sheets of glass that although shot with bullet holes are still intact. Critics have questioned what SEB wanted to express with this work, in particular with the news of shootings becoming a more frequent occurrence.

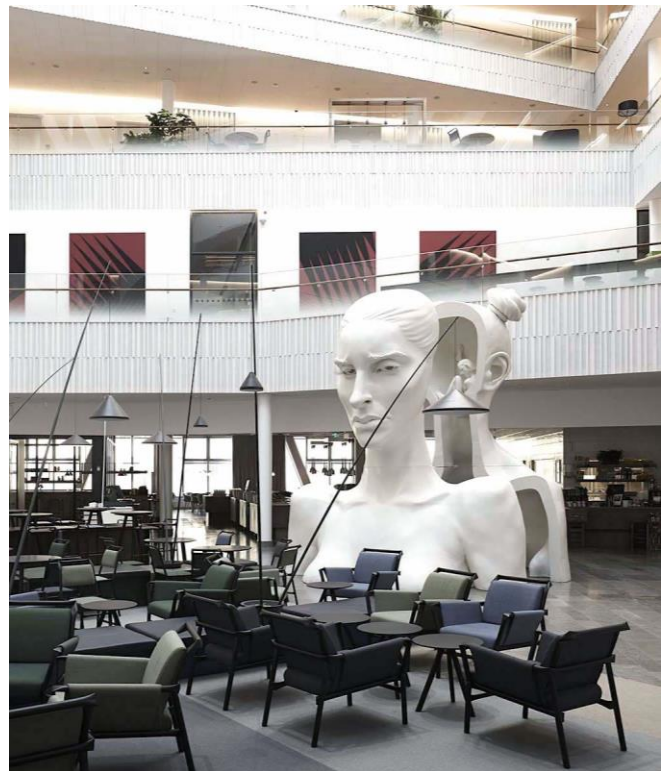
Rollof's explanation is that this piece represents his body; **although attacked by illness it cannot be ruined**. Rollof also distanced himself from violence associated with shooting, stating that he himself would never hold a gun but that the bullets in the piece were shot by a precision shooter from the Swedish Security Service (Säpo) and were all accurately pre-planned, to represent the precise nature of medication. His work continues to initiate debate.



Grey Ghosts by Ulf Rollof

The signature piece in the collection is a striking statue by **Cajsa von Zeipel**, which towers over a communal seating area.

The sculpture, almost five meters in height, depicts the bust of von Zeipel herself, split into two. Inside her head are two figures, which represent her wife Sophie Mörner. One can walk between the two parts of the sculpture, and even take a seat on a small bench carved into the inside wall.



Stamina by Cajsa von Zeipel

It was a fantastic evening and very much enjoyed by all those who attended. Many thanks again to SEB's **Ylva Lipkin** and CF Hill's **Michael Elmenbeck** for making this evening possible.